

Lantmäteriet Sweden



Geodata.se – The Swedish National SDI Portal

The Customer

Lantmäteriet, the Swedish National Mapping Agency, together with the Geodata Advisory Board, other Swedish public sector authorities and the Swedish Association of Local Authorities and Regions, has created a National Geodata Strategy for the integrated provision of information within the geodata sector. The aim of the Geodata Strategy is to provide guidance to the producers and users of geodata. The Geodata Strategy is the plan for building a national infrastructure for geodata, which is, at the same time a part of the European infrastructure.

As part of this strategy, the Geodata Project was initiated in order to create a Spatial Data Infrastructure for Sweden.

www.geodata.se

The Challenge

The objectives for the Geodata Project are to: increase the value for customers of the provision of geodata, increase co-operation within and between public and private sector, create flexible business processes; decrease the costs for the provision of geodata; increase growth and competitiveness for private sector which provide geodata products and services.

The project comprises two parts:

- business development in which models for pricing, agreements, financing and co-operation will be produced and
- a technical infrastructure for how geodata and services will be provided nationally and in Europe. This includes the development of a geodataportal.

The strategies of the Geodata Project required systems and structures within which licensing, pricing and security of data could be implemented.

The Solution

The Swedish Geodataportal is a solution based on a combination of technologies. The solution to the challenges for securing access to services and ensuring licensing terms and conditions are conferred to users is based on con terra's sdi.suite securityManager and licenseManager. These have been seamlessly integrated into the Swedish Geodataportal with some additional code. The integration of securityManager and licenseManager within the portal allows for the just-in-time generation of appropriate security gateways to services as user request access, always conforming users granted access levels and with ensuring users are aware of licensing or pricing conditions.



Geodata.se – The Swedish National SDI Portal

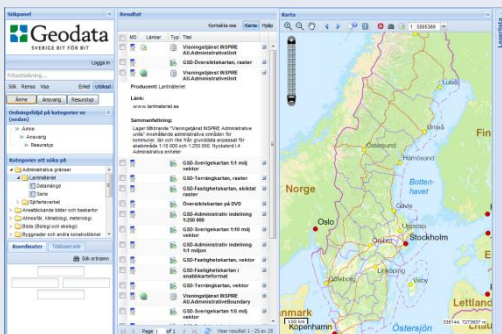
The Solution is based on

Geoportal.se is an in-house development based on Open Source components with a custom user interface. Security and digital rights management mechanisms have been provided by con terra's sdi.suite securityManager and licenseManager with additional Java code to integrate these seamlessly within the portal.

The Benefits

Lantmäteriet can provide a geodataportal that, in addition to functionality for searching, finding and evaluation of geodata, also gives cooperating organisations the tools for setting up restrictions and licensing models for the use of data, easing concerns about distributing data via spatial services: less administration – more benefit.

From a user's perspective, the application is a single, integrated solution, streamlining and simplifying processes that could otherwise be perceived as complex and unwieldy.



Customer's Opinion

The solution from con terra is an important part in our aim to achieve the ambitions in setting up a geodataportal with all the instruments defined by the Swedish Geodata Strategy. con terra, as a partner, has been very cooperative in their attitude to us and our work. It has been very easy to reach and cooperate with their consultants. They are always listening and interested in finding solutions concerning our needs.

Kjell Horth
Project Manager

Summary

- A central portal for Swedish NSDI resources
- Providing secured services, benefitting providers and users alike
- Distributed and service-based, so data remains where it is maintained
- Easier collaboration
- New market and better decision-making bases for Swedish companies

Lantmäteriet Sweden

Kjell Horth

Lantmäterigatan 2
801 82 Gävle, SWEDEN
Phone +46 202 3546 2
kjell.hjorth@lm.se

con•terra

Gesellschaft für Angewandte
Informationstechnologie mbH

Barry Masterson

Martin-Luther-King-Weg 24
48155 Muenster, GERMANY
Phone +49 251 74745 0

b.masterson@conterra.de, www.conterra.de